

Oct~Dec 2014

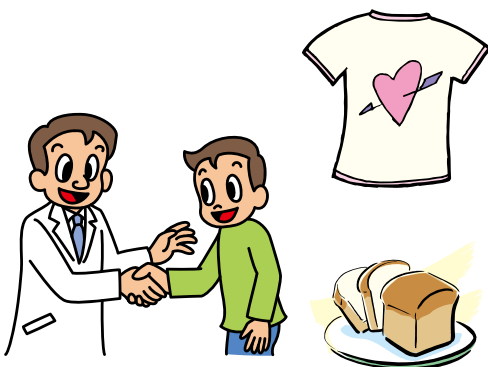


カトリック東京国際センター
Catholic Tokyo International Center

CTIC Refugees Services

CTIC なんみんサポート & なんみん交流サロン

| | | | |
|--------------------------------------|-------------------------------|---------------------------------------|--|
| Japanese Class 日本語教室 | Every Thursday 毎週木曜日 | AM11:00 ~ PM4:00 | Oct 9~Dec11 / 30 hours Capacity: 10 Peoples Application is required. |
| Refugees Cafe なんみん交流サロン | | AM12:00~PM 4:00 | 12:00~ Lunch 13:00~Language and cultural Exchanges with volunteers Everybody is welcome! |
| Food & Clothing Support 食糧支援・衣類支援 | Monday~Friday 月曜日~金曜日 | PM1:00~PM 4:00 *Please bring a bag | * Free Internet * Consultation * FRJ Dental treatment Reception |
| Medical consultation 医療相談 | 2nd & 4th Friday 第2, 第4金曜日 | PM2:00~PM 5:00 | Reservation is required. |



ARCHDIOCESE OF TOKYO
Catholic Tokyo International Center
カトリック東京大司教区
カトリック東京国際センター

4-6-22 Kamiosaki, Shinagawa-ku, Tokyo
〒 141-0021 東京都品川区上大崎 4-6-22
Tel (03)5759-1061 Fax(03)5759-1063
<http://www.ctic.jp> info@ctic.jp

Registration is required to avail the services.

目黒駅下車徒歩5分 5mins walk from Meguro Station

- JR Shinjyuku → (JR Yamanote-Line 12min) → JR Meguro
- JR Shinagawa → (JR Yamanote-Line 7 min) → JR Meguro
- JR Akihabara → (JR Yamanote-Line 25min) → JR Meguro



Place of Services & support will be transfer to another church starting Jan. 2015.